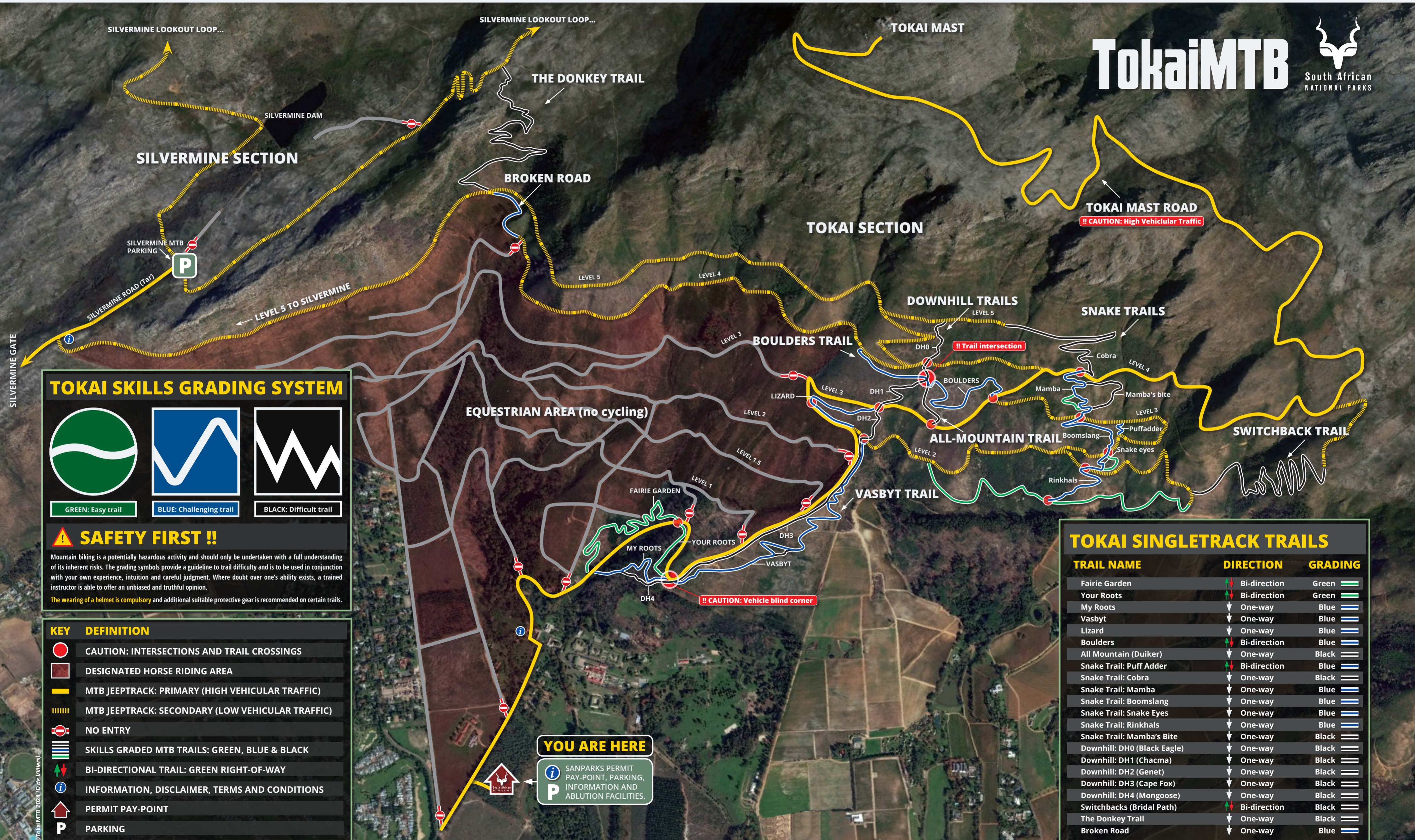


APPROVED TOKAI MOUNTAIN BIKE ACCESS ROUTES



TOKAI SKILLS GRADING SYSTEM

GREEN: Easy trail
BLUE: Challenging trail
BLACK: Difficult trail

SAFETY FIRST !!

Mountain biking is a potentially hazardous activity and should only be undertaken with a full understanding of its inherent risks. The grading symbols provide a guideline to trail difficulty and is to be used in conjunction with your own experience, intuition and careful judgment. Where doubt over one's ability exists, a trained instructor is able to offer an unbiased and truthful opinion.

The wearing of a helmet is compulsory and additional suitable protective gear is recommended on certain trails.

KEY	DEFINITION
	CAUTION: INTERSECTIONS AND TRAIL CROSSINGS
	DESIGNATED HORSE RIDING AREA
	MTB JEEPTRACK: PRIMARY (HIGH VEHICULAR TRAFFIC)
	MTB JEEPTRACK: SECONDARY (LOW VEHICULAR TRAFFIC)
	NO ENTRY
	SKILLS GRADED MTB TRAILS: GREEN, BLUE & BLACK
	BI-DIRECTIONAL TRAIL: GREEN RIGHT-OF-WAY
	INFORMATION, DISCLAIMER, TERMS AND CONDITIONS
	PERMIT PAY-POINT
	PARKING

TOKAI SINGLETRACK TRAILS

TRAIL NAME	DIRECTION	GRADING
Fairie Garden	↕ Bi-direction	Green
Your Roots	↕ Bi-direction	Green
My Roots	↕ One-way	Blue
Vasbyt	↕ One-way	Blue
Lizard	↕ One-way	Blue
Boulders	↕ Bi-direction	Blue
All Mountain (Duiker)	↕ One-way	Black
Snake Trail: Puff Adder	↕ Bi-direction	Blue
Snake Trail: Cobra	↕ One-way	Black
Snake Trail: Mamba	↕ One-way	Blue
Snake Trail: Boomslang	↕ One-way	Blue
Snake Trail: Snake Eyes	↕ One-way	Blue
Snake Trail: Rinkhals	↕ One-way	Blue
Snake Trail: Mamba's Bite	↕ One-way	Black
Downhill: DH0 (Black Eagle)	↕ One-way	Black
Downhill: DH1 (Chacma)	↕ One-way	Black
Downhill: DH2 (Genet)	↕ One-way	Black
Downhill: DH3 (Cape Fox)	↕ One-way	Black
Downhill: DH4 (Mongoose)	↕ One-way	Black
Switchbacks (Bridal Path)	↕ Bi-direction	Black
The Donkey Trail	↕ One-way	Black
Broken Road	↕ One-way	Blue

YOU ARE HERE

SANPARKS PERMIT PAY-POINT, PARKING, INFORMATION AND ABLUTION FACILITIES.